

## *Shoreline Research*

*Consulting, Strategic Marketing, Editorial and Ideas*

# The Wireless “WAN-Scape” Wild and Woolly or ROI Ready?

***Tim Scannell***

President/Chief Analyst

[tjscan@shorelineresearch.com](mailto:tjscan@shorelineresearch.com)

# Technology: Pushing the Mobile Metaphor



# ***Why Go Mobile Or Wireless?***

- Increases enterprise effectiveness & productivity
- Mobile access to email & contact info
- Mobile access to enterprise systems
- Extends 'collaborative' efforts (among field force, sales force, and executives)

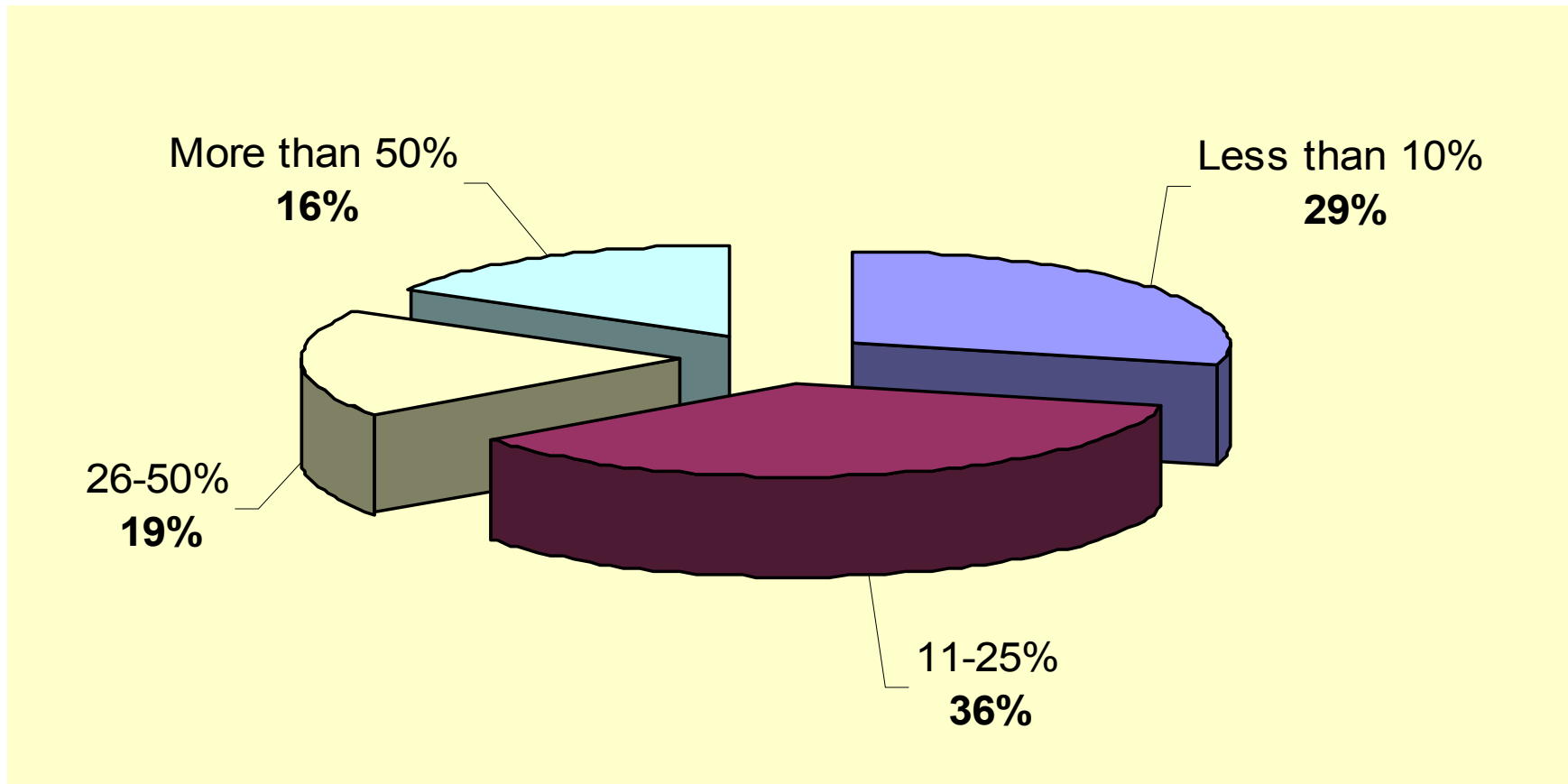
- Allows for more up-to-date 'business

# ***How Are Devices Updated with New Information?***

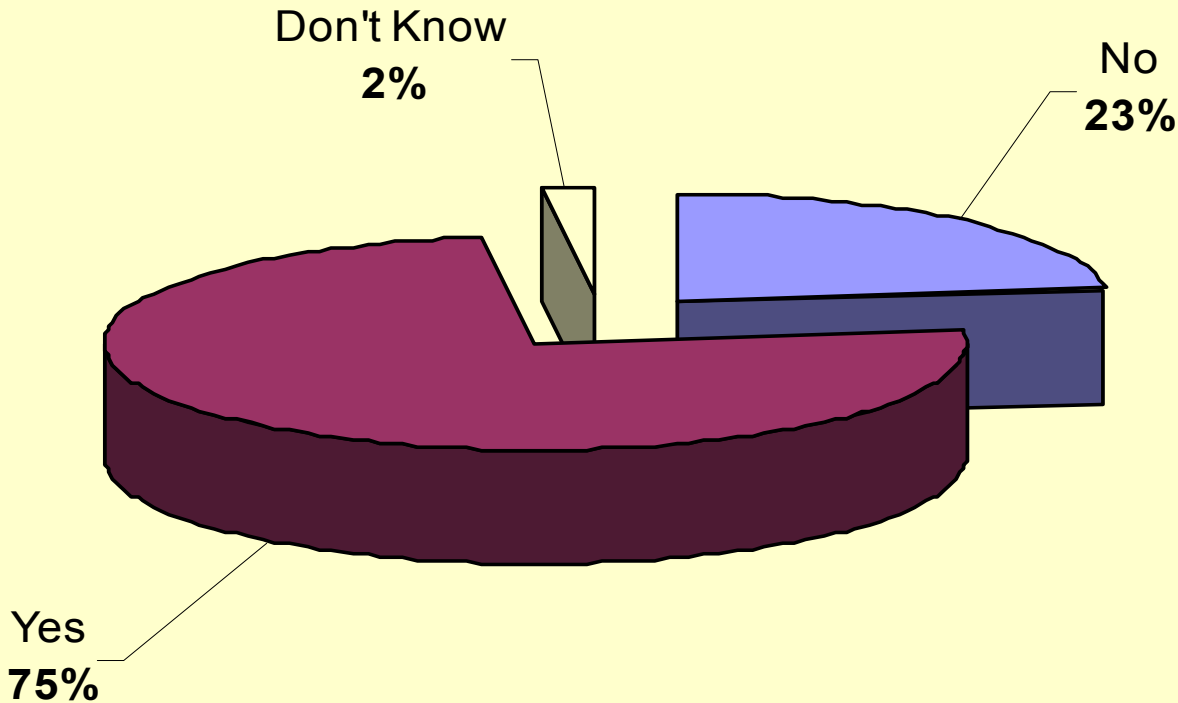
- Most users synchronize once or twice a day
- The majority of applications rely on one-way push technology
- Most applications do not communicate or interact with each other
- Poor collaborative abilities make for mobile 'Islands in the Scream'

Based on Survey of Enterprise IT Users

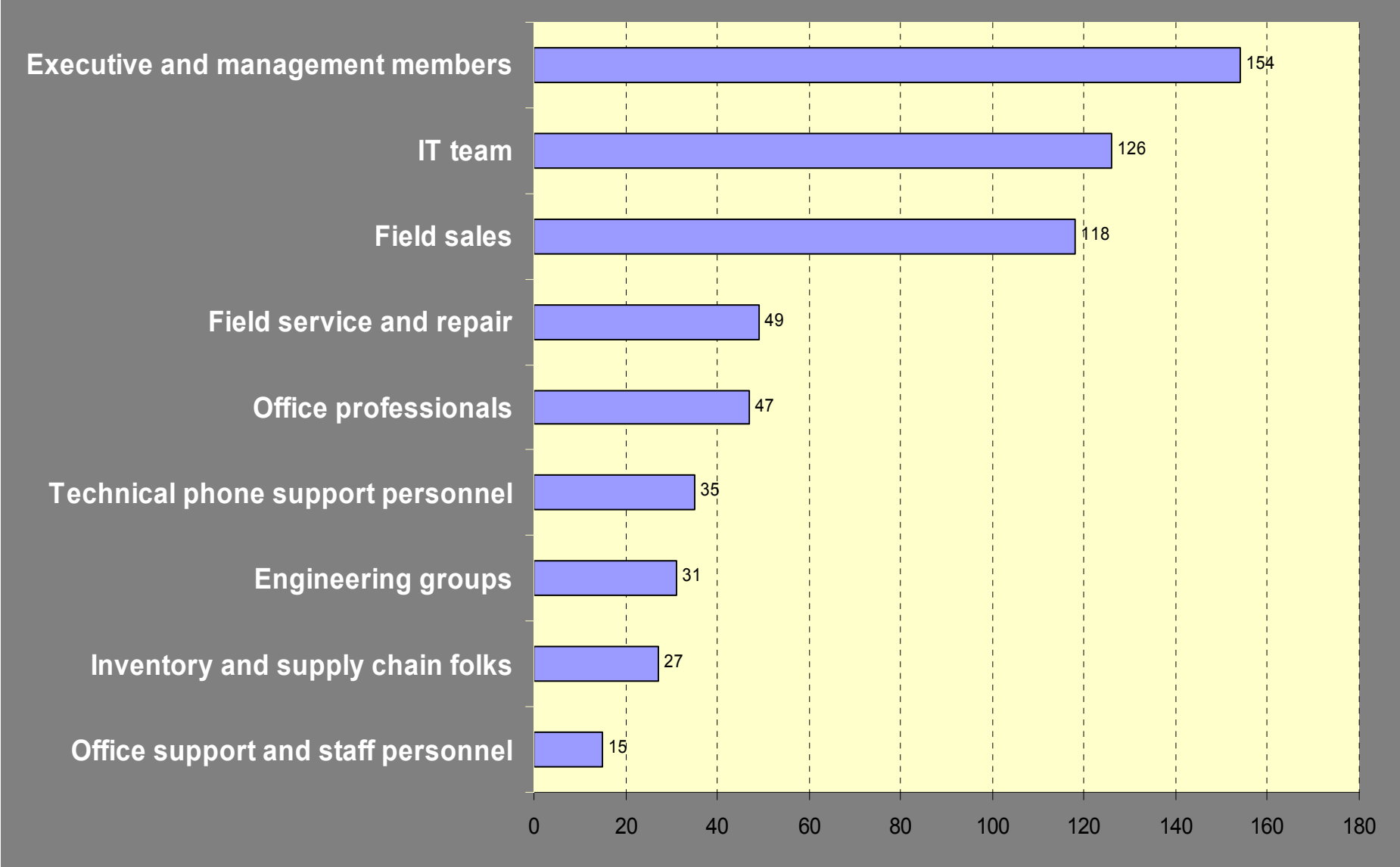
# Percent Of Mobile Workers In Company



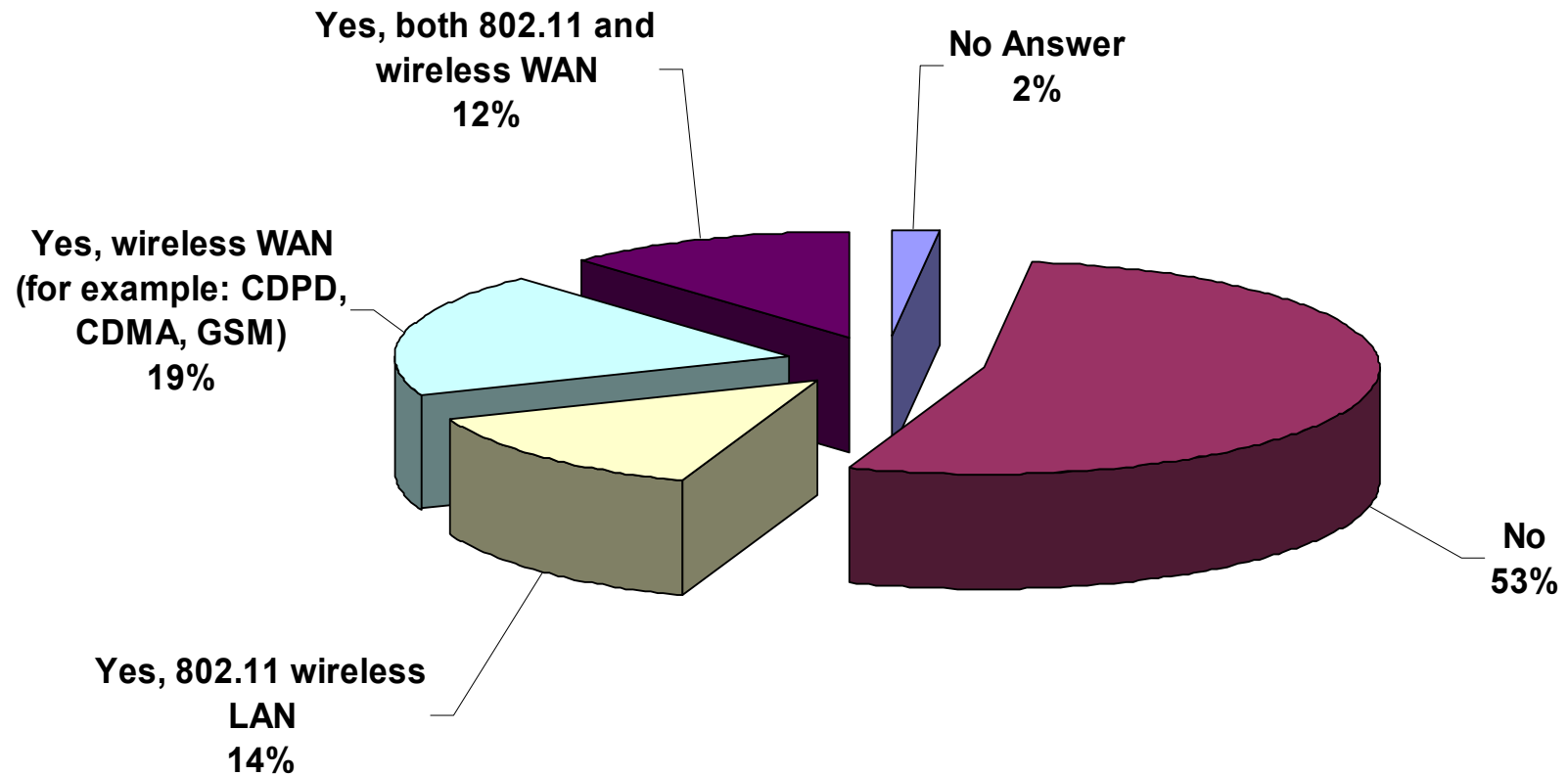
# Mobile Devices Used As Part Of SFA, FFA, and Mobile Worker Efforts



# Who is Holding the Handhelds?

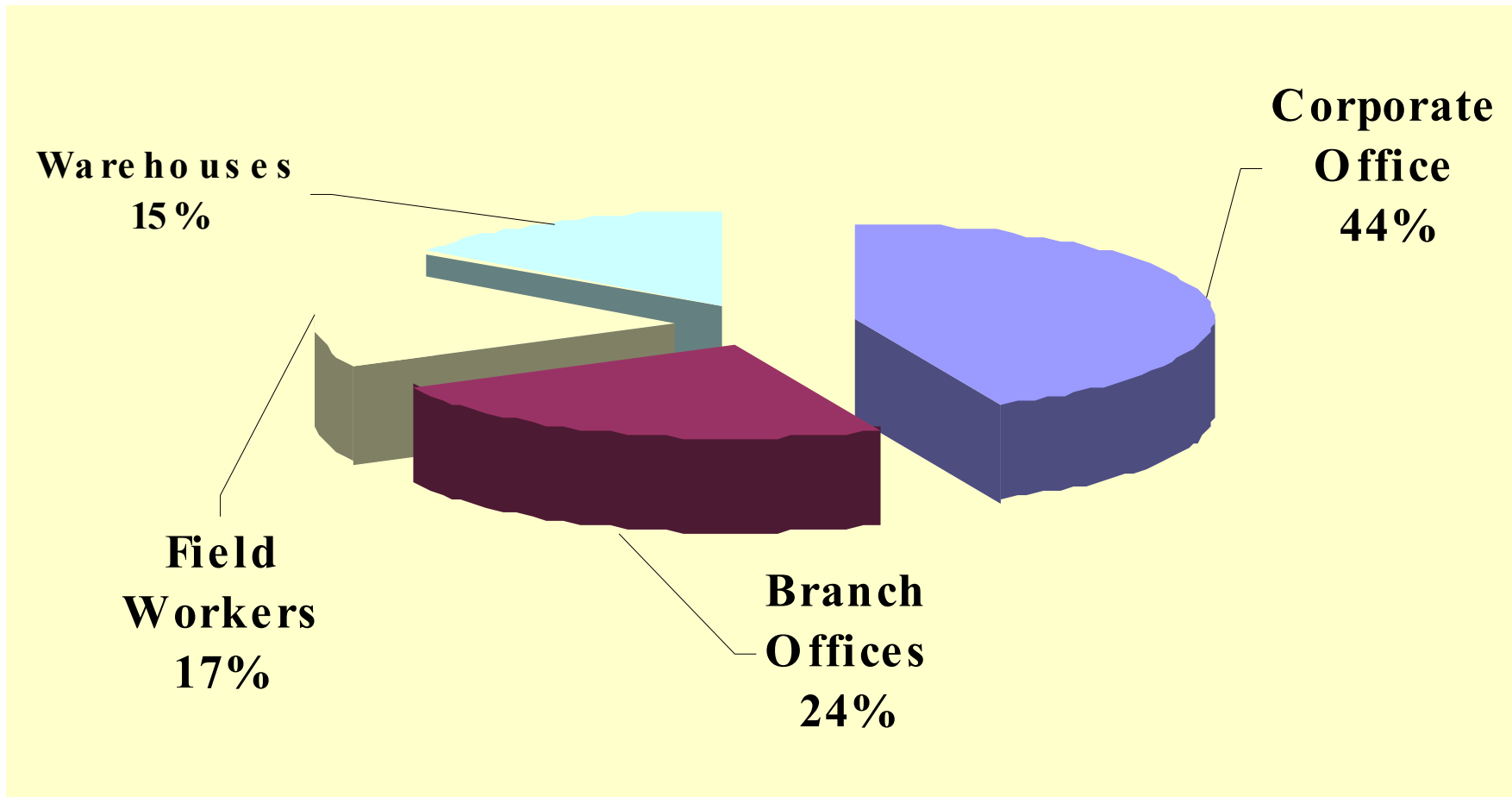


# Wireless Use Within the Enterprise

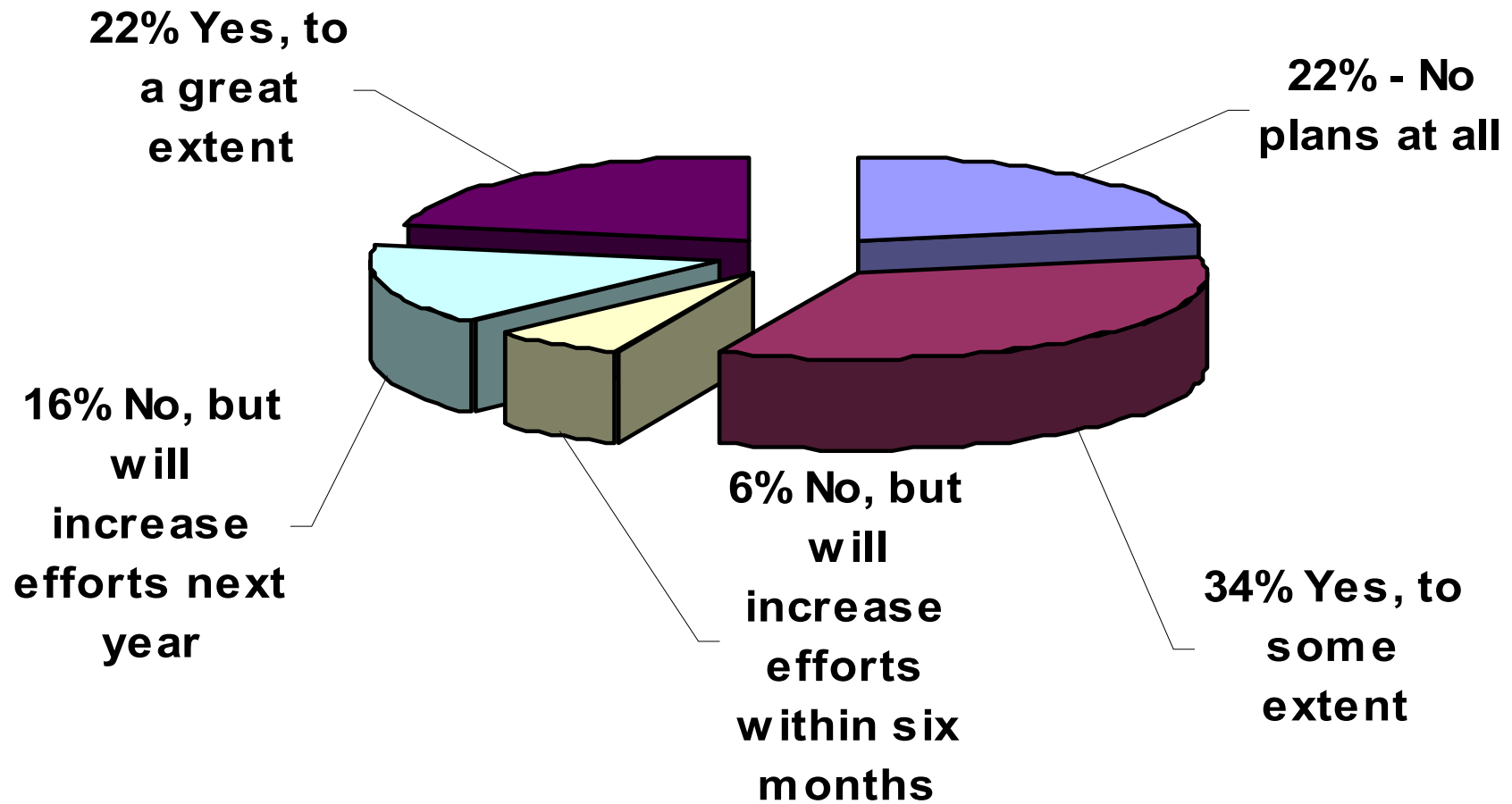




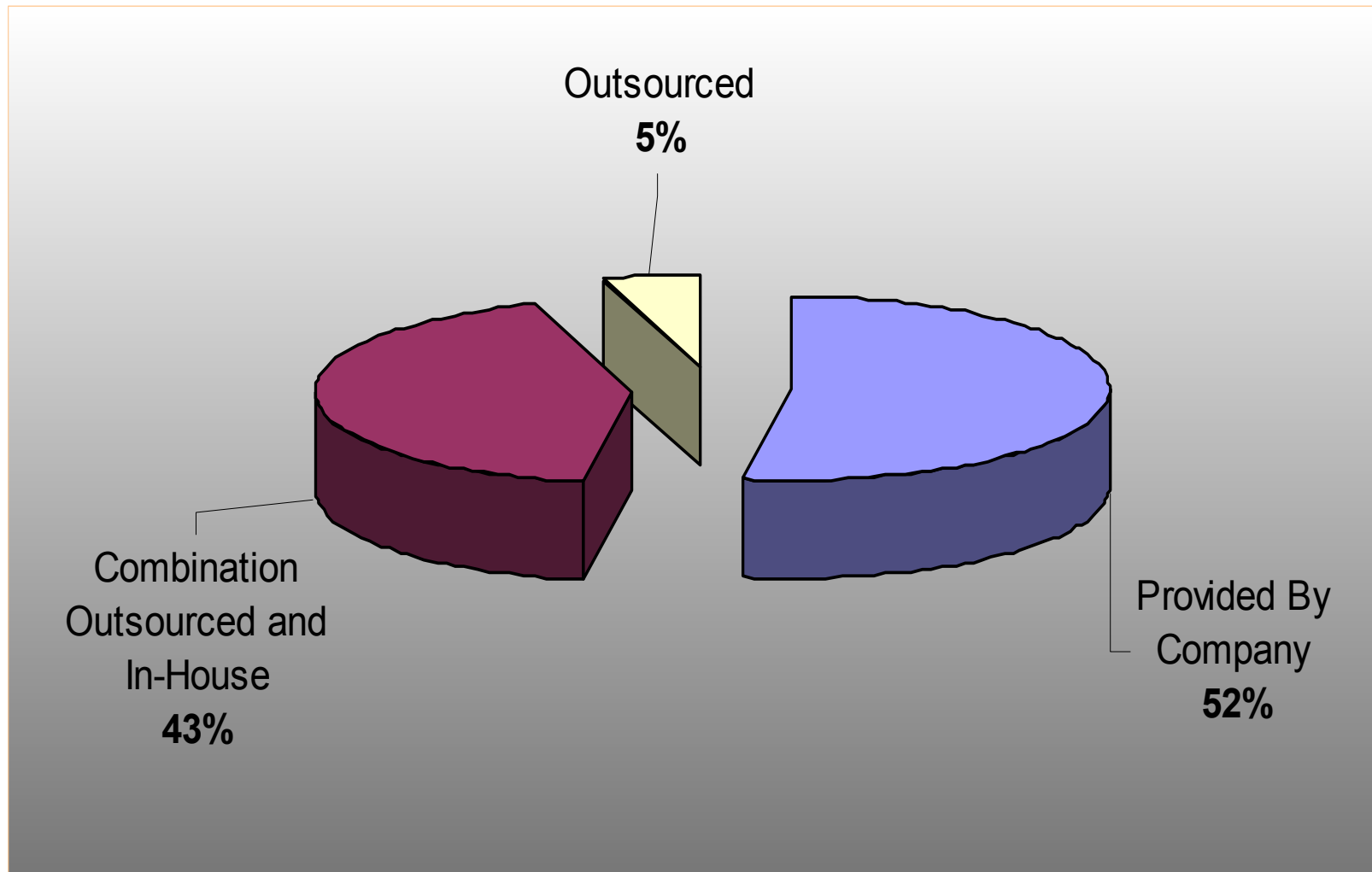
# Where will wireless most immediately occur?



# Is Your Company Presently Focusing More Attention On Messaging As a Business Tool?



# Mobile And Wireless IT Services



# ***Wireless Future: Always On, Always Available Devices***

- Devices that maintain almost continuous connections to remote resources and hosts
- Rapid and multiple synchronizations
- Improved 'mission critical' information delivery capabilities
- Applications that are designed for pervasive connections and constant information and applications exchanges

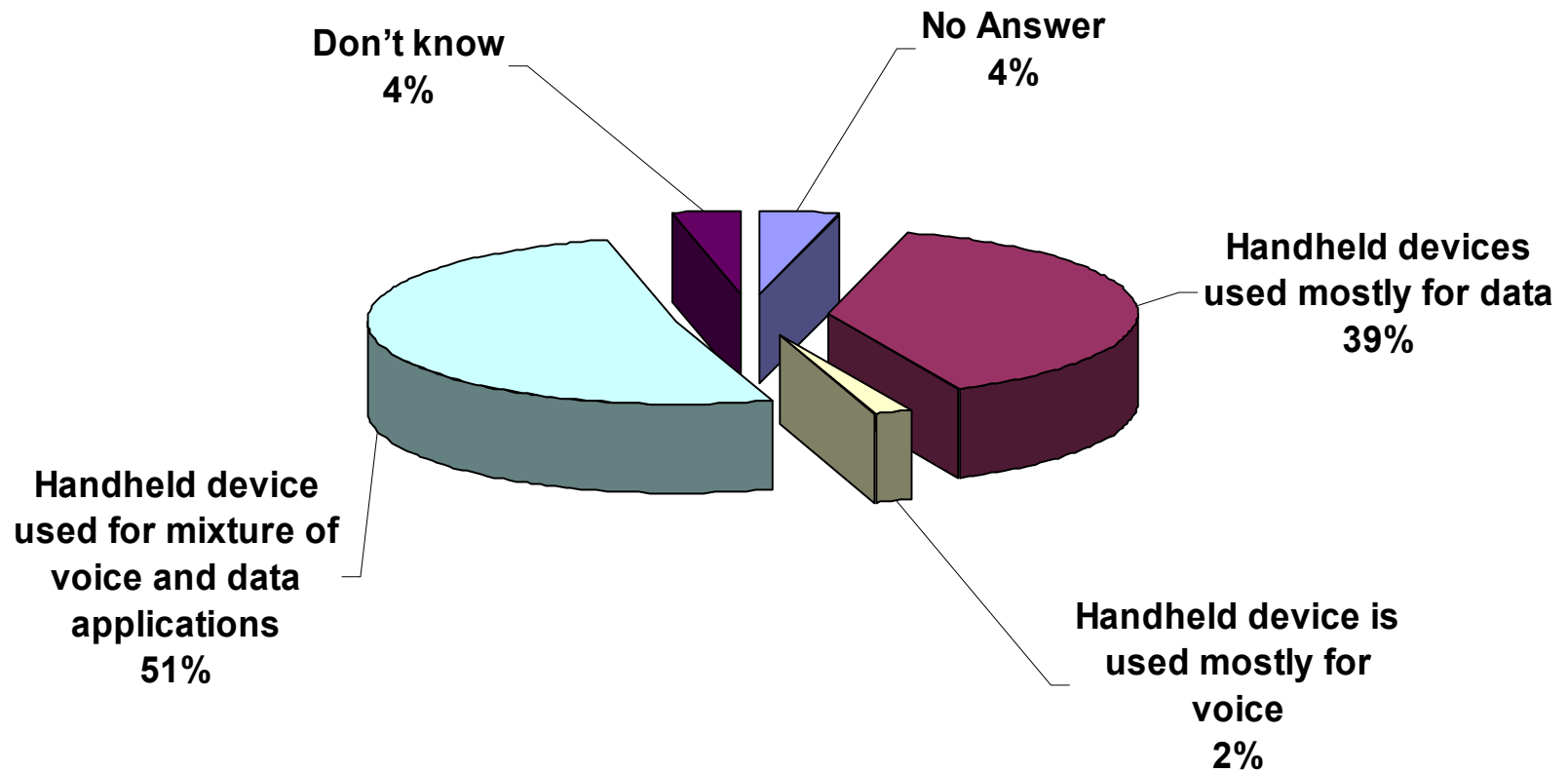
# ***The Importance of Underlying Technologies***

- Reliable and pervasive services
- Ability for rapid and multiple synchronizations
- Automatic roaming and user authentication
- ‘Just-in-time security techniques
- Location-based capabilities
- Personalization
- Support for multiple networks

# Evolution of New Types of 'Application-Centric' Devices

- 'Larger Glass' Tablet PC Systems
- Wireless-enabled 'Wearable' PCs
- Voice/Data Wireless Devices
- Portable Video Conferencing Systems
- Mobile 'eLearning' Systems
- Flexible '*Transformers*'

# Handheld Usage in the Future



# A Wireless Black Cloud

.Enterprises are reluctant to make significant investments and deployments

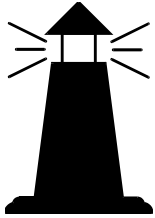
- Technology does not sell

- Wireless is caught up in the telecommunications vortex

Slow roll-out of more aggressive wireless infrastructures

- Impact of Homeland Security on deployments





# *Shoreline Research*

***Consulting, Strategic Marketing, Editorial and Ideas***

## **Panelists**

Greg Caltabiano  
Senior Vice President for Worldwide Markets  
**SOMA Networks, Inc.**

Inder Gopal  
Chairman and Chief Product Officer  
**Reefedge, Inc.**

Upal K. Basu  
Co-founder and VP of Corporate Development  
**mFormation Technologies Inc.**

Rob Lowery  
Co-founder and director of business development  
**Revolution Consulting**